

MEMORANDUM FOR THE RECORD**SUBJECT: 23JDA25 MU1&2 shutdown for approximately 4 hours**

On Wednesday 21 June 2023 at approximately 1300 JDM was raking trash on MU1 when they got snagged on something and two teeth on the trash rake got bent (see figure 1). They asked JDF to deploy their ROV to investigate the problem. In order to deploy the ROV MU1 had to be shutdown, and MU2 was not running at the time. This led to a deviation from the Fish Passage Plan (3.2.3.1. Whenever Unit 1 is not operating, operate Unit 2 for adult attraction). JDF deployed the ROV in front of MU1B and started examining the trash racks. When the ROV reached depths of 120-130ft it encountered a lot of woody debris and also found a large piece of metal (see figure 2&3). After the initial inspection with the ROV, the bent teeth on the trash rake were cut out and MU1 was raked again. An estimated 16tons of debris was removed. A gatewell drawdown had been conducted earlier that day and the differentials for MU1 were within criteria. After the large amount of debris was removed a second ROV inspection was conducted and found significantly less woody debris and did not see the piece of metal. MU1 was returned to service around 1700 that day and repairs are underway for the bent teeth of the trash rake.

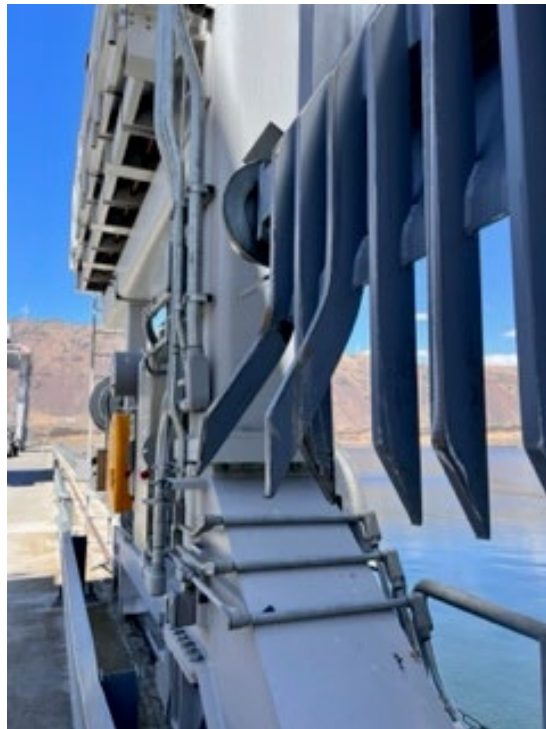


Figure 1 Two bent teeth on the trash rake



Figure 2 Metal found in front of MUI trash rack

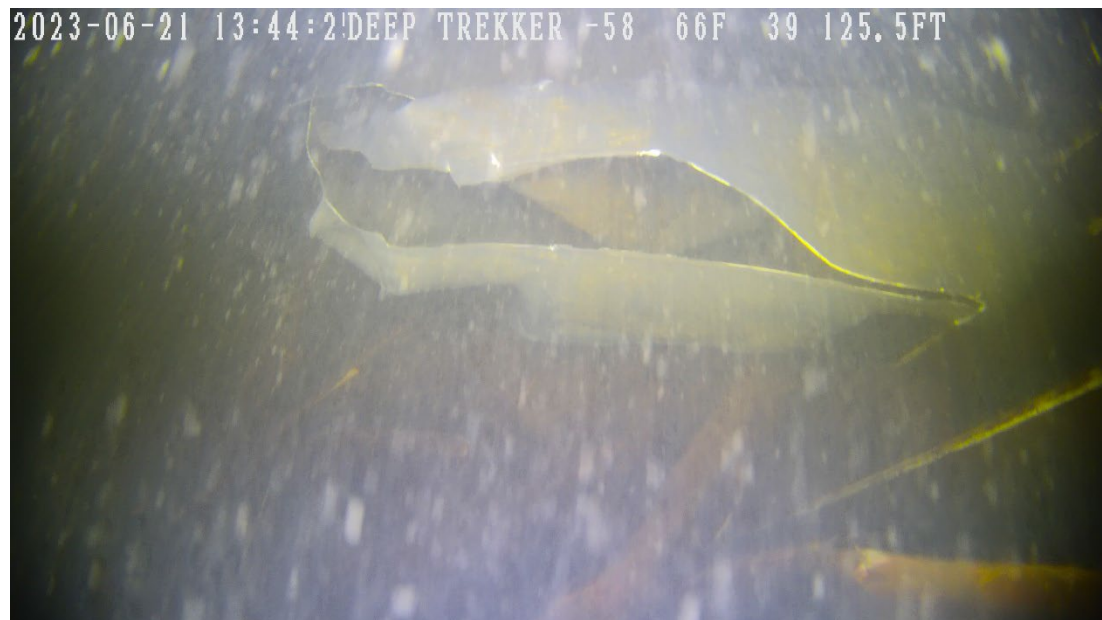


Figure 3 Metal found in front of MUI trash rack (the other end of the same piece)

Sincerely,
JDA Fisheries